



CUSTOM ACCESSORIES REPLACEMENT STEERING WHEEL

INSTALLATION INSTRUCTIONS

1. DESCRIPTION: REPLACEMENT STEERING WHEEL

2. APPLICATION: 05-UP FORD MUSTANG

3. PART NUMBER: SII P/N

SW-3227-GT-GN SW-3227-GT-AD SW-3227-GT-GR
SW-3227-GT-GO SW-3227-GT-GQ SW-3227-GT-GS

4. KIT CONTENTS:

ITEM	QTY	DESCRIPTION
A	1	P/N : SW-3227 Replacement Steering Wheel
B	1	Installation Instructions

5. TOOLS REQUIRED:

- Thin Flathead Screwdriver
- Torque Wrench
- T-20 & T-30 Torque Screw Drivers
- 5/16" Socket
- 15/16" Socket
- Small Philips Screwdriver

6. PRE-INSTALLATION CAUTIONS / NOTES:

Read the installation sheet and check the entire kit for possible damage or defects before performing any work.

Ensure front wheels are pointed straight ahead

Make sure to disconnect the ground cable from the battery

Following installation of new steering wheel, ensure horn is working properly



CAUTION

Sherwood Innovations Inc. **STRONGLY** recommends that a professional mechanic trained in the removal and installation of airbag systems, complete the installation of this product



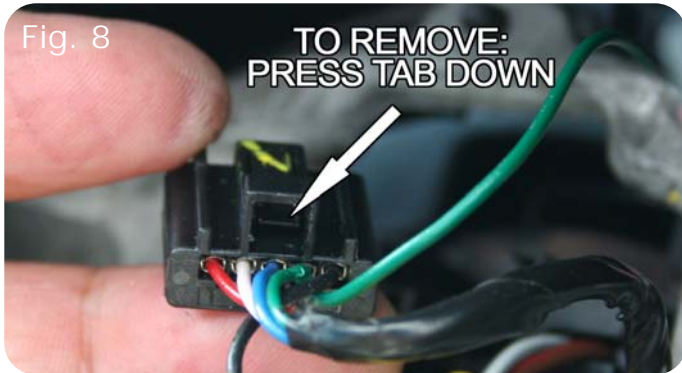
REPLACEMENT STEERING WHEEL



1. Begin installation by having front wheels pointed straight ahead
2. ****Disconnect ground cable from battery (Fig. 1)**
3. Remove round plastic plugs located behind steering wheel spokes located at 9 and 3 o'clock (Fig. 2)
4. Using a 5/16" socket, remove bolts from inside each plugged area (Fig. 3)
5. Pull out central hub ****NOTE-This component contains the air bag (Fig. 4)**
6. Disconnect Air Bag activation plugs (Fig. 5)
7. Using a T-30 torques screwdriver, remove three bolts that hold on the horn activation plate ****MAKE SURE TO WATCH FOR SPRINGS BEHIND BOLTS (Fig. 6)**



REPLACEMENT STEERING WHEEL



8. Remove plate and locate steering wheel wiring harness (Fig 7)
9. Follow harness from steering wheel switches to main plug (Fig. 7)
10. Using a thin flathead screwdriver, release wiring harness plug by pressing in tab located at top center of wiring plug (Fig. 8)
11. To remove steering wheel controls, grab plastic spoke cover at outside edges and pull off (Fig. 9)
12. Pull out steering wheel controls using thin flathead screwdriver to gently pry controls from steering wheel (Fig. 10-11)
13. Using a Philips screwdriver, unscrew wiring harness ground and remove wiring harness clips from factory wheel (Fig. 12-13)





REPLACEMENT STEERING WHEEL



14. Using a 15/16" socket, remove main steering wheel bolt and slide factory steering wheel off of steering column (**Fig. 14-15**)



15. Using a T-20 torques screwdriver, remove plastic hub from back of steering wheel (4 screws) (**Fig. 16**)

16. Slide hub onto new steering wheel and screw in place (**Fig. 17**)



17. Transfer switches into new steering wheel. Apply even and firm pressure around controls in order for controls to snap into place (**Fig. 18**)

18. Push new steering wheel in place on steering column (**Fig. 19**)



REPLACEMENT STEERING WHEEL



Fig. 20



Fig. 21



Fig. 22



Fig. 23

19. Secure new steering wheel by replacing 15/16" main steering wheel bolt until tight (**see manufacturers specs.**) and steering wheel has returned to original position (**Fig. 20**)

20. Clip wiring harness into place on new steering wheel and screw in ground (**Fig. 21**)

21. Reinstall horn activation plate making sure all springs are in correct position and screw in bolt until shoulder of bolt meets steering wheel base (**Fig. 22**)

22. Plug in wiring harness

23. Plug in air bag activation plugs and set central hub back into place (**Fig. 23-24**)

24. Reinstall bolts behind steering wheel spokes on either side and plug holes with factory plugs (**Fig. 2-3**)

25. Reconnect ground cable to battery (**Fig. 1**)

26. Ensure horn is working properly following installation of new steering wheel



Fig. 24